

# T50

Rack actuator  
Thrust force 500N  
Adjustable stroke max.1000 mm



## PRODUCT DESCRIPTION

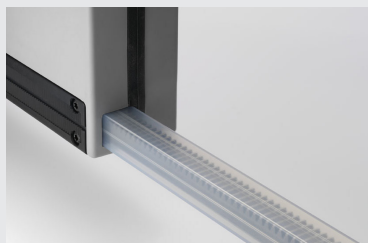
Linear electrical actuator, model T50, with rack, with self-aligning swivel movement, complete with brackets and fitting accessories for top hung windows. Available at 230V 50Hz or at 24V DC. Max. applicable force 500N, max. stroke 1000mm +/- 20mm. Stroke adjustable about every 50mm by external adjusting selector. Preset for the mechanical connection of 2 or more push points by transmission rod. S version for simultaneous synchronization and operation of two actuators installed on a single window (without connecting bar) available on demand . CE marked device.



Connection of several drives by adding connecting rods and rack groups for the installation in large windows.



Fast installation without the need of power, thanks to the self-aligning sliding bracket with easy adjustment in 2mm steps along the body of the actuator.



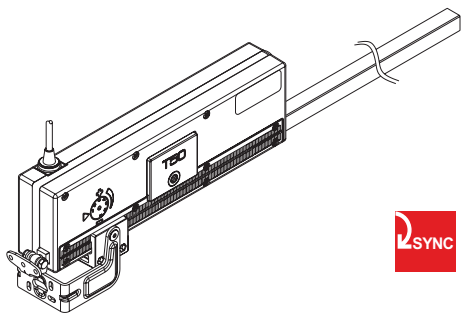
High protection IP 55 rated.



## TECHNICAL SPECIFICATIONS

|  | T50 230V                                   | T50 24V   |
|--|--|-----------|
| Power supply voltage                       | 230V ~ 50Hz                                | 24 V d.c. |
| Max. applicable load                       | 500 N                                      |           |
| 2 push points (1 master + 1 slave)         | 500 N                                      |           |
| 2 push points (1 master + 1 master)        | 700 N                                      |           |
| 3 push points (1 master + 2 slave)*        | 450 N                                      |           |
| Distance between 2 push points             | max 2,4m - min 1m (1,5m between 2 masters) |           |
| Available strokes (+/- 20mm) T50 mod. 320  | 150 - 200 - 250 - 320 mm                   |           |
| Available strokes (+/- 20mm) T50 mod. 500  | 150 - 200 - 250 - 320 - 400 - 450 - 500 mm |           |
| Available strokes (+/- 20mm) T50 mod. 750  | 180 - 280 - 370 - 470 - 560 - 650 - 750 mm |           |
| Available strokes (+/- 20mm) T50 mod. 1000 | Millimetrically adjustable on demand       |           |
| Absorbed current at max. load              | 0,3 A                                      | 1,4 A     |
| Idle translation speed                     | 18 mm/s                                    | 10 mm/s   |
| Duration of the idle stroke                | (stroke/idle translation speed)            |           |
| Double insulated                           | YES  | -         |
| Service type                               | S2 of 4 min                                |           |
| Operating temperature                      | - 5°C +55°C                                |           |
| Protection class                           | IP 55                                      |           |
| Parallel connection option                 | YES  |           |
| Stroke end                                 | encoder                                    |           |

\* Operation up to 6 drives on the same window frame is possible by transmission rod. Ask our technical dept. for the placement of the pushing points and the calculation of the thrust force.



### T50 Actuator Kit (master)

|         |   |
|---------|---|
| 3C20001 | T50 Rack actuator 230V stroke 320 mm (adjustable)     |
| 3C20002 | T50 Rack actuator 230V stroke 500 mm (adjustable)     |
| 3C20013 | T50 Rack actuator 230V stroke 750 mm (adjustable)     |
| 3C22004 | T50S Rack actuator 230V stroke 1000 mm (adjustable) * |
| 3C20003 | T50 Rack actuator 24V stroke 320 mm (adjustable)      |
| 3C20004 | T50 Rack actuator 24V stroke 500 mm (adjustable)      |
| 3C20014 | T50 Rack actuator 24V stroke 750 mm (adjustable)      |
| 3C22008 | T50S Rack actuator 24V stroke 1000 mm (adjustable) *  |



T50S version for the synchronous operation of two T50 on the same window frame without connection rod available upon request.

\* T50S with stroke 1000mm is equipped with electronic board for the synchronized operation of 2 actuators on the same window. Thrust force 400N.



### T50 Rack assembly kit (slave)

|        |  |
|--------|--|
| 3C2100 | T50 Rack assembly stroke 320 mm<br>(connection and fitting accessories included) |
| 3C2101 | T50 Rack assembly stroke 500 mm<br>(connection and fitting accessories included) |
| 3C2104 | T50 Rack assembly stroke 750 mm<br>(connection and fitting accessories included) |
| 3C2105 | T50 Rack assembly stroke 1000mm<br>(connection and fitting accessories included) |

### T50 connection rod

|        |  |
|--------|--|
| 1C2505 | T50 connecting rod - Length 1500 mm (interaxis max. 1400 mm) |
| 1C2509 | T50 connecting rod - Length 3000 mm (interaxis max. 2400 mm) |

### Description of the standard pattern for 2 push points

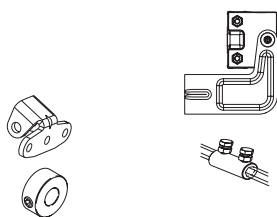
|         |   |
|---------|---|
| 3C20001 | T50 Rack actuator 230V stroke 320 mm (adjustable) |
| 3C2100  | T50 Rack assembly stroke 320 mm                   |
| 1C2505  | T50 connecting rod - Length 1500 mm               |

### Description of the standard pattern for 3 push points

|         |   |
|---------|---|
| 3C20001 | T50 Rack actuator 230V stroke 320 mm (adjustable) |
| 3C2100  | T50 Rack assembly stroke 320 mm                   |
|         | T50 Rack assembly stroke 320 mm                   |
| 1C2509  | T50 connecting rod - Length 3000 mm               |

### Accessories and spare parts

|        |  |
|--------|--|
| 8C0016 | CC1 control unit for simultaneous stop max 3 T50 230V stroke 320mm |
| 3C2010 | Actuator support brackets  |
| 3C2001 | Spare parts and sash bracket                                       |
| 1C2804 | Junction ring between the connecting rods for 3 push point         |
| 0A0483 | connecting rod stop  |



|            | A        |
|------------|----------|
| T50 320 mm | 576.5mm  |
| T50 500 mm | 746.5mm  |
| T50 750 mm | 983.5mm  |
| T50 1000mm | 1246.5mm |

