

Instruction for Fitting set A.

Article no.: 812

Please read this instruction for use and assembly before installation and use.

Contents:

1. Advice on security and warnings
2. Guidelines for use
3. Installation

1. Advice on security and warnings.

- This product complies with all prescribed security regulations. Inappropriate use can cause damage to users and product.
- VenSet cannot be held responsible for any damage on the window or other parts of the building, whether it is caused by ordinary use, wrong installation, unauthorized maintenance or incorrect use.
- Please read the instruction before using the window the first time. It will give you important directions as to security, use and installation of the window opener, and thus prevent any damage on both you and the product.
- This window opener may not be used on windows functioning as emergency exits.
- Please keep this instruction hereafter.

2. Guidelines for use.

- This Fitting set A article no. 812 has been designed to be used together with VenSet electrical window opener article no. 110, when this is to be installed in roof windows.
- This instruction must be used together with the instruction: vej_110_060101.doc.
- Point 3 conc. Installation in this instruction replaces point. 3 in the instruction: vej_110_060101.doc for VenSet electrical window opener article no. 110.
- Fitting set A is to be used together with standard sill fittings, which are delivered with the electrical window opener.

3. Installation

- Risk of bodily harm: Be careful that the window does not suddenly open or close uncontrollably during the installation of the window opener.
- The VenSet window opener replaces the ordinary operating and locking devices of the window. Before the installation of the window opener on the enclosed fittings, the window must be opened, and the ordinary operating and locking devices of the window must be removed.
- The window opener is to be installed on the sill at the bottom of the window.

Marking of holes for sill and frame fittings.

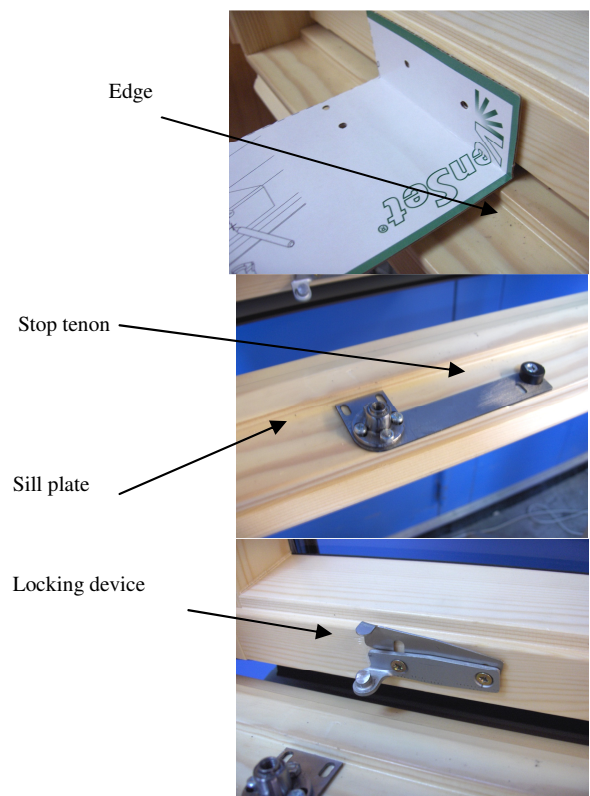
On the inner top of the box you find the screw template designed to mark the holes for sill and frame fittings. Make this marking with the window closed/locked with the original fittings to make sure that the window will close just as tightly with the window opener as it did before the installation. Place the template right up to the frame and right down to the upper edge of the sill.

Installation of sill fittings.

Install the sill fittings on the sill plate with the enclosed screws and nuts. Fit the sill plate with fittings into the the marked holes in the sill. The fitting holes are the oblong ones.
(The enclosed sill plate and stop tenon might look different than on the picture)

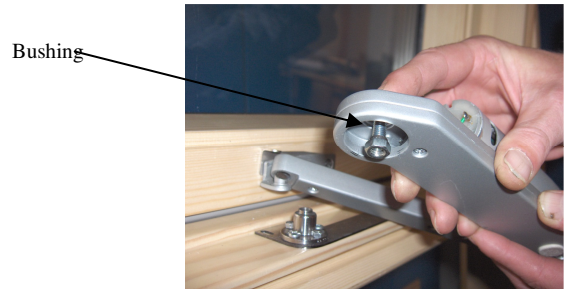
Installation of frame fitting and locking device.

Place the frame fitting in the marked holes on the frame. Leave a small distance for the locking device.
Place the locking device between the frame fitting and the frame as shown on the picture.
The easiest way to do this is with the window still closed.



Installation of window opener on frame fitting.

Install the screw M6 x 20 in the window opener with the bushing and tighten the nut with your fingers.
You do not need to tighten the screw completely, but the bushing must be placed all the way up in the hole in the window opener.
Screw, bushing and nut are assembled in the bag to avoid that the small bushing gets lost.



Installation of window opener on frame fitting.

Open the window opener half way by using the enclosed control panel and power supply.



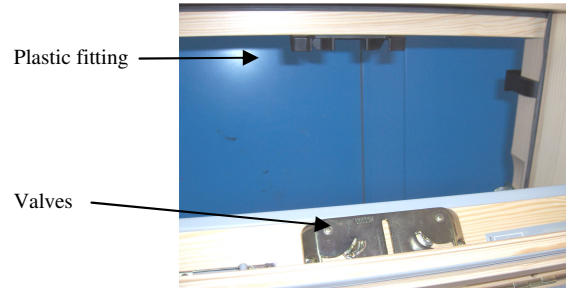
Fastening of frame fitting and locking device.

Place the window opener in the frame fitting as shown on the picture and tighten the frame fitting in the frame.
The easiest way to do this is with the window still closed.



Fastening of ventilation valve.

On some Velux windows the ventilation valve is the control panel, and this cannot be removed but has to be fastened in order to install and use the window opener.
To do so you must dismantle the plastic fitting at the top of the window. Tip the two valves in the fittings. Tip the ventilation valve back into place. It will now be fastened.
Tip: Make sure the the window opener is locked in the frame fitting, and that this is fastened to the frame. Thus the window opener can hang from the frame while the ventilation valve is fastened..



Fastening of window opener on sill fitting.

Place the screw in the sill fitting and tighten it with an octagon key.



Please see instruction for VenSet electrical window opener article no. 110 for further instructions on use, maintenance and legislation.

Manufacturer: Venset A/S
Nygade 63
Dk-6900 Skjern.
www.venset.com