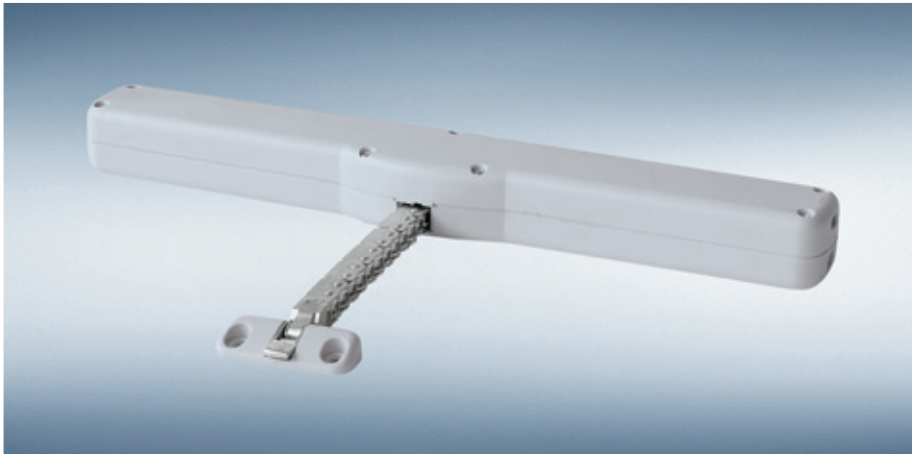


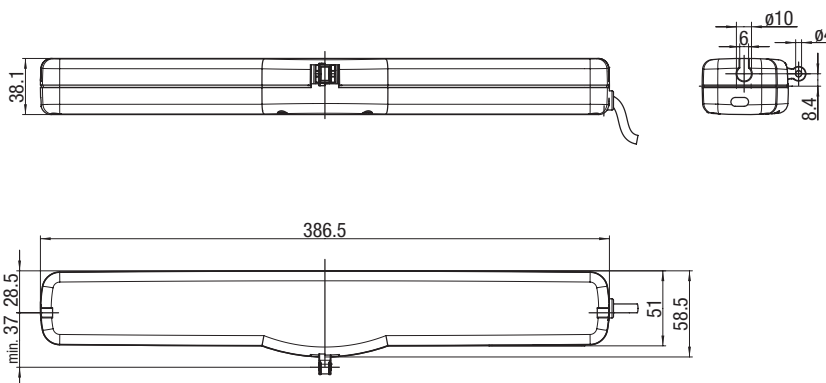
## Product features, Dimensioned drawing, Technical data



### Product features

- Compact size
- Integral microprocessor controller
- Synchronised tandem operation
- Electronic limit stop switch
- Automatic overload cut-off
- Suitable for small sash heights
- Variable stroke adjustment
- Automatic gasket relief

### Dimensioned drawing



### Dimensions

- 386,5 x 38,1 x 58,5 mm L x H x D

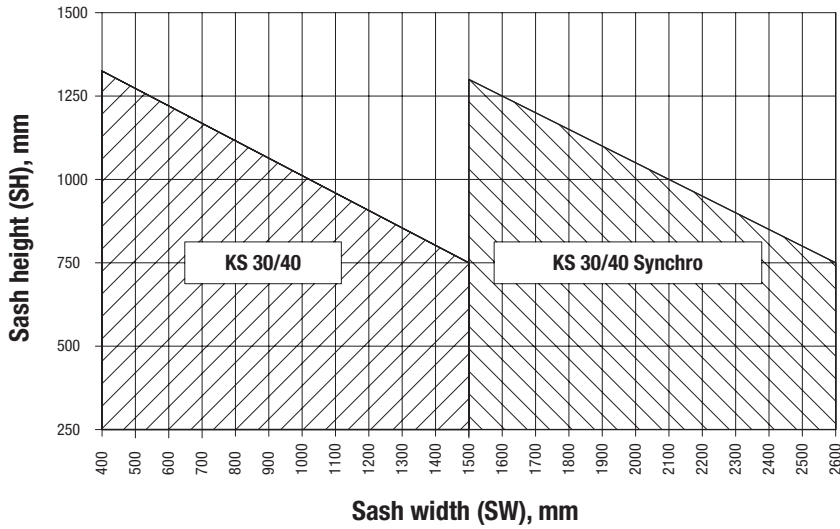
### Technical data

Type of drive	ELTRAL KS 30/40
Nominal voltage	110 / 230 V AC
Push/pull force	300 N
Current consumption	0,12 A
Opening width (adjustable)	110 mm / 200 mm / 300 mm / 400 mm
Stroke speed	12 mm/s
Duty ratio	30 %
Locking pressure	1000 N
IP protection class	30
Connecting cable	2 m, 3-core (Solo) / 2,5 m, 5-core (Synchro)
Case	PVC

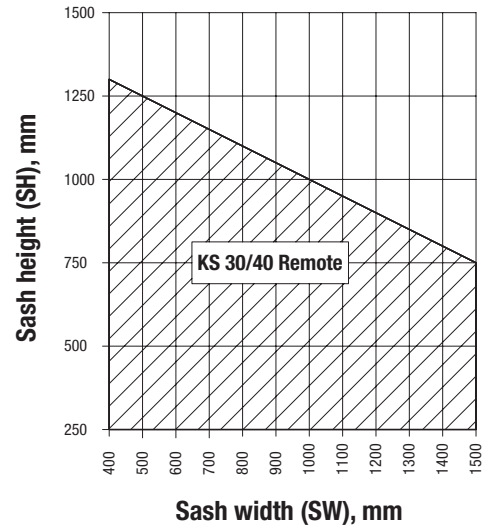
## Application range <sup>[1]</sup>

### Application diagrams

ELTRAL KS 30/40



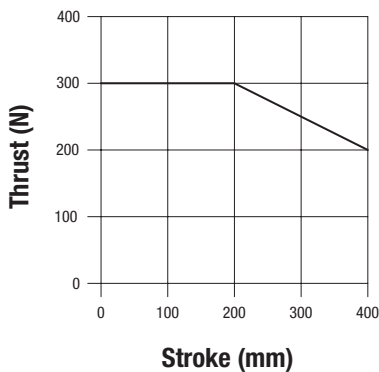
ELTRAL KS 30/40 Remote



### Thrust diagram

ELTRAL KS 30/40

ELTRAL KS 30/40 Remote



<sup>[1]</sup> All values are reference values which may vary depending on the profile used and the height of the building. The maximum window size and the permitted lengths of unmounted profile jambs (in view of sufficient gasket pressure) must be agreed with the profile manufacturer and/or window fabricator. The instructions of the particular profile system, hardware and glass manufacturers must be observed. The maximum length of unmounted profile jambs is 1500 mm.